



64800L

Softstyle Women's Pique Polo

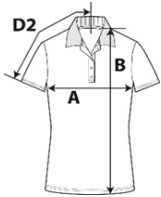


DETAILS

Fabric
Yarn Count
Features

100% Ring Spun Cotton, 177.0 G/SqM (White 172.0 G/SqM)
 31/1
 Made with our soft ring spun cotton and cotton blends.
 Softstyle features a double pique that is durable and breathable, ideal for embroidery.
 Proud Better Cotton™ member.
 Cotton products from Gildan support more sustainable + ethical cotton farming.
 Companion style: 64800
 Soft ring spun fabric feels great against your skin
 Rolled forward shoulders
 Clean finished placket with dyed-to-match buttons
 Semi-fitted, side seamed body
 High-performing black tear-away label
 Bangladesh
 S - 2XL 36 PIECES
 Colours 8
 SKU's 40

Country of Origin
Case Packs
Colours
SKU's



SPECIFICATIONS

Centimeters	Tol-	Tol+	S	M	L	XL	2XL
Chest (A)	2.540	2.540	42.500	45.500	50.500	54.500	59.000
Length from HPS (B)	2.540	2.540	64.500	67.000	70.000	72.500	75.000
Sleeve length (Center back) (D2)	1.905	1.905	38.000	39.500	41.000	43.000	46.000

Inches	Tol-	Tol+	S	M	L	XL	2XL
Chest (A)	1.000	1.000	16.730	17.910	19.880	21.460	23.230
Length from HPS (B)	1.000	1.000	25.390	26.380	27.560	28.540	29.530
Sleeve length (Center back) (D2)	0.750	0.750	14.960	15.550	16.140	16.930	18.110

COLOURS

- Black
- Daisy
- Navy
- Red
- Ring Spun Sport Grey
- Royal
- Sapphire
- White

Code	Colour Chip	Sizes	Comments
036		S-2XL	90% Cotton, 10% Polyester
098		S-2XL	
032		S-2XL	
040		S-2XL	
295		S-2XL	
051		S-2XL	
026		S-2XL	
030		S-2XL	

CHANGES

Total Net Change 0 SKU's